



Sallaum
Lines

We are **wavemakers**

At sea and on land



**Sallaum Lines
Company Profile**

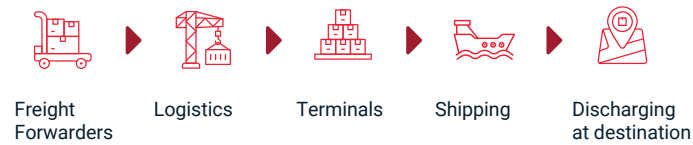


Introduction to The Group

SAFICO Holding Ltd is a privately owned Cypriot-based holding which owns Sallaum Lines. SAFICO Holding has a global conglomerate with diversified investments in shipping and logistics.

The strong reputation and expansive global reach of SAFICO Holding LTD empower Sallaum Lines to confidently navigate the dynamic demands of the finished vehicle supply chain.

The launch of **Sallaum Lines Ltd** in 2011 was a strategic initiative to capture the growth potential in the Roll-on/roll-off (RORO) market. Now a top 10 player in the industry, our management's expertise has propelled exponential growth, positioning us as a reliable partner in the finished vehicle logistics industry.

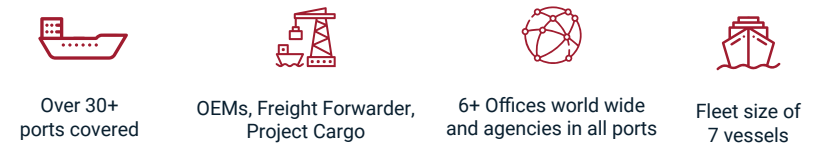


Introduction to Sallaum Lines

Sallaum Lines Ltd is a Cypriot-based prominent global player in the automotive transportation industry, specializing in providing Ro/Ro Shipping Services to OEMs and Freight Forwarders.

The company offers comprehensive global transportation solutions, specifically focusing on the shipping of vehicles, trucks, and heavy equipment.

We specialize in the Ro/Ro market, capitalizing on its growth potential to become a leader in the industry. Our success lies in our ability to provide seamless logistics solutions, ensuring that your vehicles are efficiently transported from manufacturing facilities to destinations worldwide.





A Snapshot of Sallaum Lines

2025 in numbers

380,000

Total CEU

150,000

Deadweight tonnage

8

Vessels

Experience in numbers

5m+

Vehicles shipped

550k+

End users served

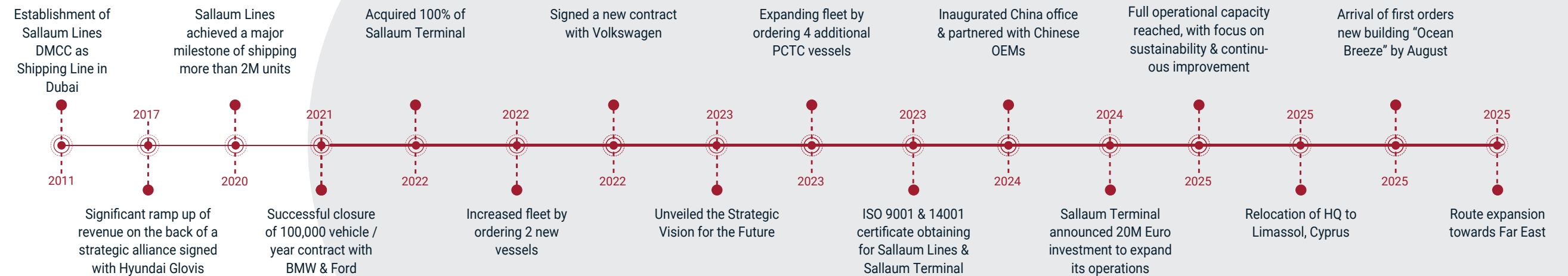
37+

Ports called

440+

Competent Group Employees

Major Milestones





SILVER GLORY

PANAMA

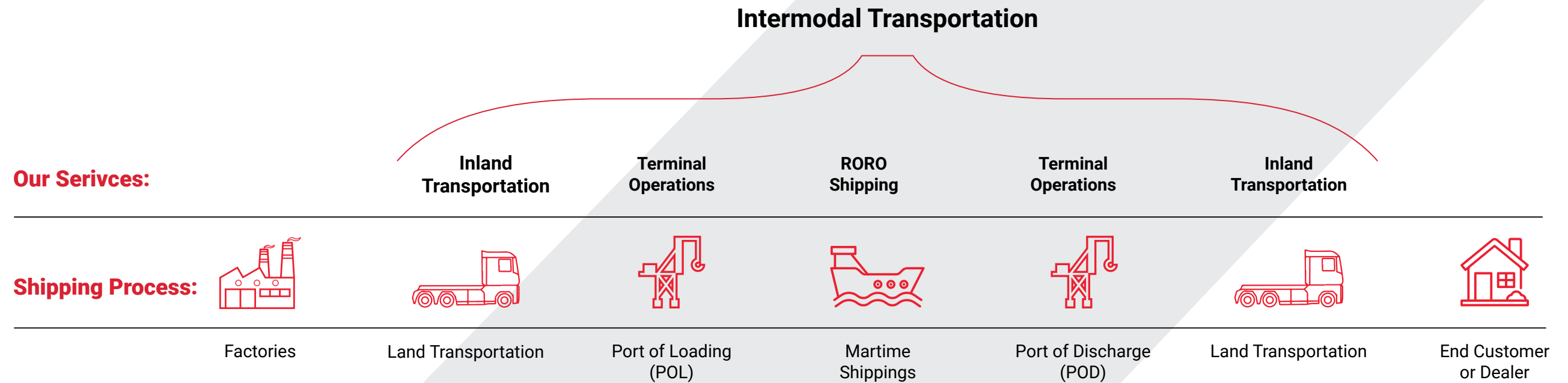
MAX LOAD: 60TON
MAX AXLE LOAD: 20TON/2W

IMO 9070474

Our Services



Services

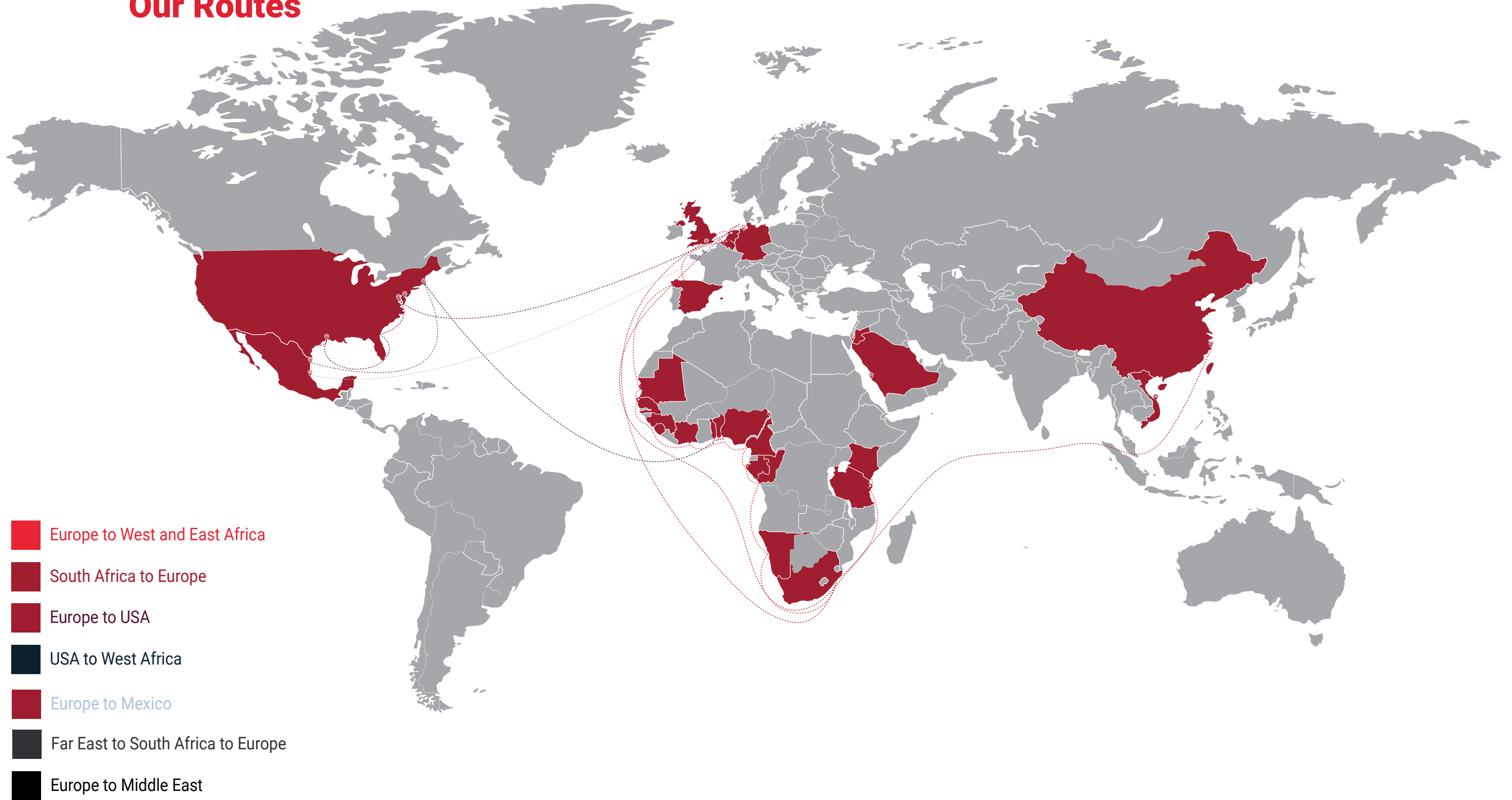


Optimized Supply Chain Management

- Specialized in outbound logistics, Sallaum Lines offers cost-effective, sustainable solutions for efficient product delivery.
- In-depth analysis of networks and challenges to provide tailored services impacting business goals.
- Focus on integrated client value chains with end-to-end management, enhancing route efficiency and reducing transit times.
- Flexible options including made-to-order services and prioritized vehicle delivery.
- A broad suite of services for diverse industries, ensuring a smooth product market journey.
- Commitment to success with customized supply chain solutions, ensuring an optimized and streamlined process.



Our Routes





Current Fleet

Vessel	Flag	Cargo Capacity ^(CEU)
Ocean Explorer	Panama	7500
Ocean Breeze	Cyprus	7500
Silver Sky	Panama	4900
Silver Queen	Panama	4900
Silver Ray	Panama	5130
Silver Soul	Panama	4300
Silver Glory	Panama	4300
Silver Sun	Panama	4000
Pelagic Piranha	Liberia	4000

Vessel	Flag	Cargo Capacity ^(CEU)
Ocean Explorer	Panama	7500
Ocean Legacy	Cyprus	7400

Vessels on Order - OCEAN CLASS

Vessel	Engine	Cargo Capacity ^(CEU)
Ocean Express	Cyprus	7400
Ocean Navigator	Cyprus	7400
Ocean Triumph	Panama	7400



Key Strengths and Advantages

Sallaum Lines exhibits several key strengths and advantages that make them an ideal partner for OEMs and carmakers worldwide:



Specialization
in Automotive
Logistics



Efficient and
Secure
Transportation



Global
Reach and
Market
Access



Streamlined
Supply Chain
Management



Cost-Effective
Solutions



Ports and
Terminals
Coverage



Commitment
to Customer
Satisfaction



Timely and
reliable
delivery





Intermodal Logistics

We can offer you the fastest and most cost-effective solution to move your vehicles inland to the sales destination, whether it's for domestic or international distribution.



Terminal Operations

Sallaum Terminal in the Port of Antwerp, the Second-Largest European seaport after Rotterdam, functions as the main hub of Sallaum Enterprises' shipping activities in Europe.

Sallaum Terminal in the Port of Antwerp has a total capacity of 240,000 m² and 70,000 m² of covered warehouses.

Ship Handling

- Deepsea Meets Shortsea
- Breakbulk and Projects
- Quality and Safety

Terminal Handling

- Truck Handling
- Rail Handling
- Storage/Warehousing
- Heavy Lifts

Completion of Phase One Terminal Expansion



Park-House

Area: 47,000 m²
CEU: 6,000



PDI Center

Area: 3,000m²
CEU: Accessories, Repair



Sallaum Lines Key People



Sami Sallaum
Chairman

In 2010, Sami Sallaum assumed the role of Chairman of Sallaum Lines Cyprus. As an executive with over 13 years of industry experience, Sami has been crucial in guiding the organization toward its goals, driving growth, and ensuring its continued success in a competitive business landscape.



Abed Stouhi
CEO

In 2004, Abed Stouhi joined the Group and has assumed multiple key roles throughout his tenure since then. Since Sallaum Lines' establishment, Abed has assumed the role of CEO, showcasing his extensive experience and capabilities in the shipping and logistics sector and profoundly impacting the company's growth.



Kay Lemcke
COO

In 2012, Kay Lemcke started with Sallaum Lines Germany as Managing Director. In January 2023, he was appointed COO of Sallaum Lines Cyprus. Networking within the shipping industry over 25 years, Kay adds in-depth industry experience in the liner business, including chartering and sale & purchase of vessels.



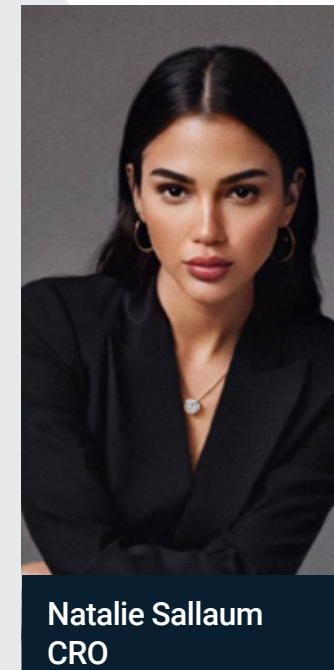
David Van Ballaert
Managing Director

Since 2014, David Van Ballaert has served as Managing Director of Sallaum Lines Belgium, bringing over 25 years of extensive expertise to the RORO liner trade and terminal operations. David currently plays a pivotal role in the company's growth, demonstrating strong leadership in a dynamic team



Ibrahim Kazan
CFO

In 2020, Ibrahim Kazan became a member of the Group and currently serves as the Chief Financial Officer of Sallaum Lines Cyprus. With over 18 years of advancing experience in finance, he brings a wealth of knowledge gained from previous roles in prominent Big 4 consultancy firms.



Natalie Sallaum
CRO

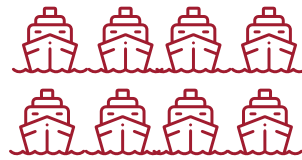
Natalie joined Sallaum Lines in 2021 as Head of Global Sustainability, leading fleet efficiency and emissions reduction efforts. In 2024, she became Chief Relationship Officer, driving partnerships, governance, and diversification to strengthen the company's global leadership.



Environmental Responsibility

Over the last year, we made significant improvements on our way towards a greener future, resulting in:

Economic Data



Total owned and chartered PCTC vessels: 8



Ordered LNG Dual Fuel: 5

300,000
Total Units Shipped (CEU)



30+
Number of Ports

Efficiency of LNG vessels

99%

Can reduce SOx by over

96%

Can reduce NOx by over

Emits

25%

less carbon dioxide (CO2)

63%

Greenhouse Gases



120,000

Dead Weight Tonnage

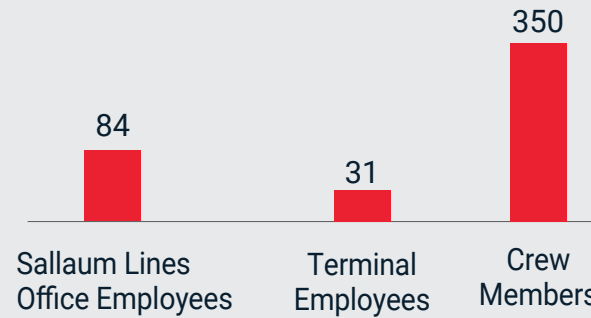


4.5M+

Total Vehicles Shipped

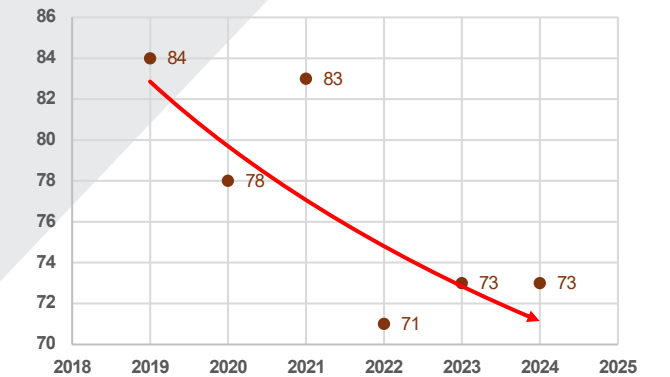
Social Data

Number of Employees



Environmental Data

Average CO2 Emission Intensity [kg/kTxNM]



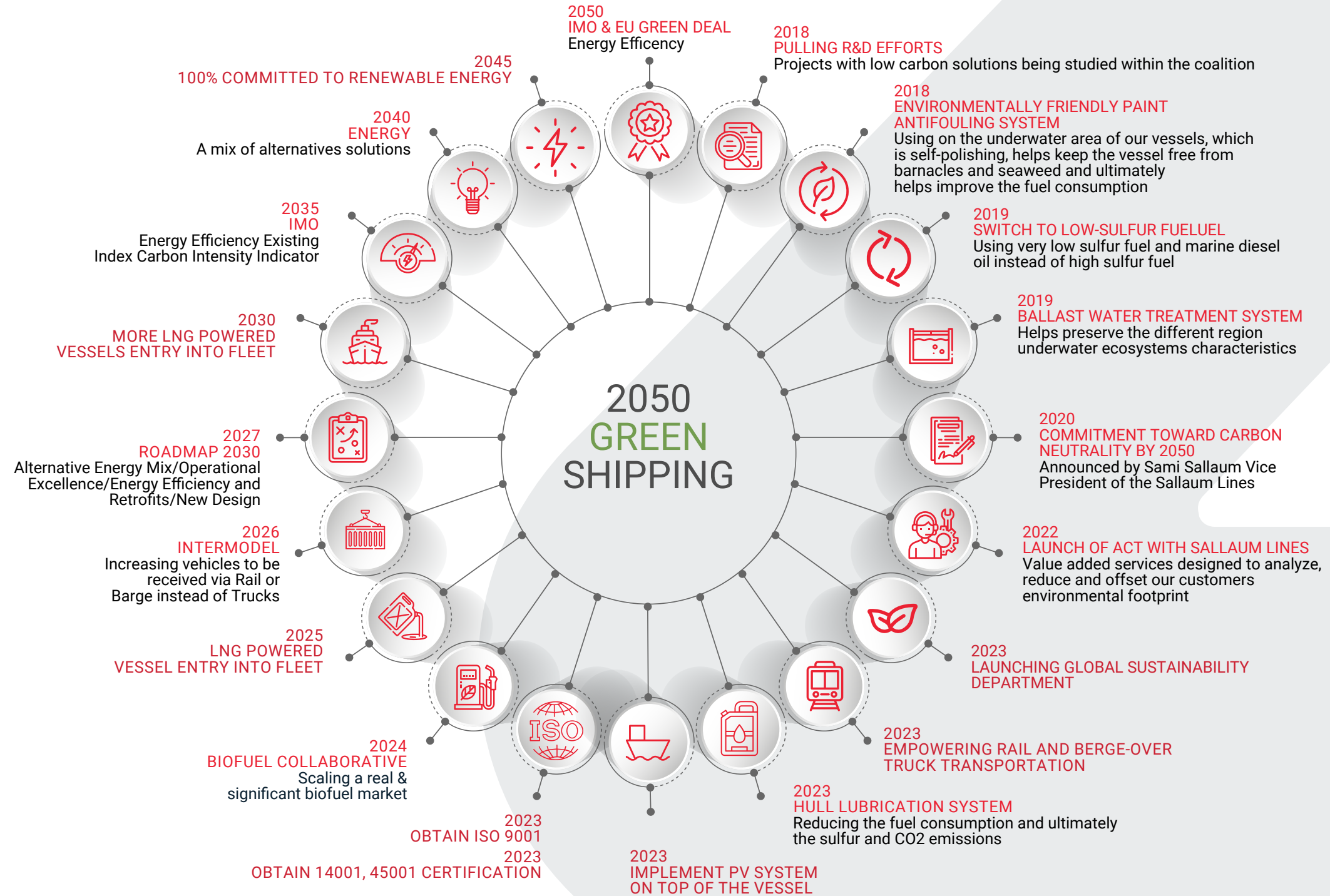
Sallaum Lines set a target to further reduce the CO2 emissions in 2030 by 40%.



Oil Leakage: 0



Sustainability Strategy





**Sallaum
Lines**

SALLAUM LINES LTD

Omonoias & Pafou 58, Frantzis Tower, 3060

oem.sales@sallaumlines.com

www.sallaumlines.com

